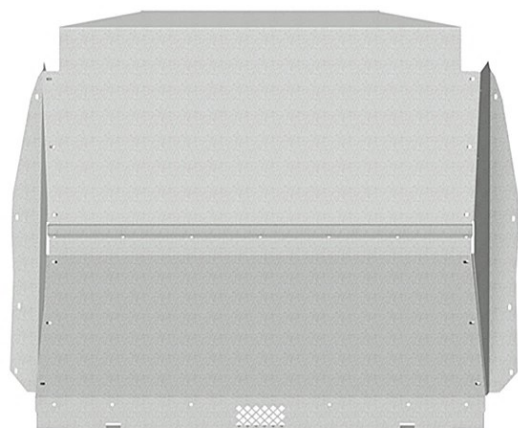


**CLOISON POUR CAMION**  
**ET BIEN PLUS**

**1-855-835-2422**  
**[www.6sserden.com](http://www.6sserden.com)**

**Acier galvanisé**

**26-42096**



---

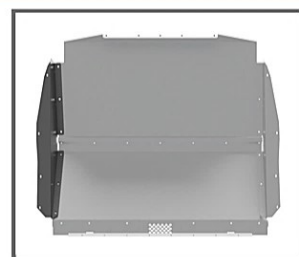
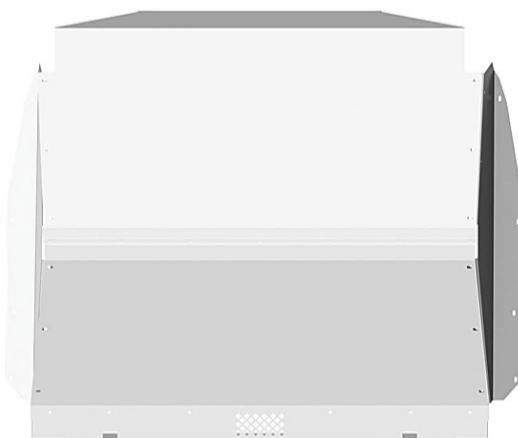
## **RAM ProMaster City – GALV. SANS PERFORATION**

---

- **Matériel: Acier galvanisé**
- **Camion: RAM ProMaster City**

**Aluminium**

**26-42094**



---

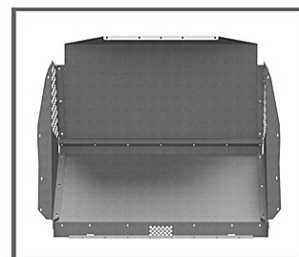
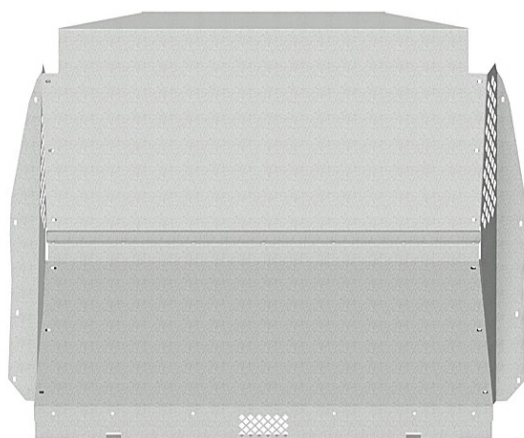
## **RAM ProMaster City – ALUM. SANS PERFORATION**

---

- **Matériel: Aluminium**
- **Camion: RAM ProMaster City**

**Acier galvanisé**

**26-42074**

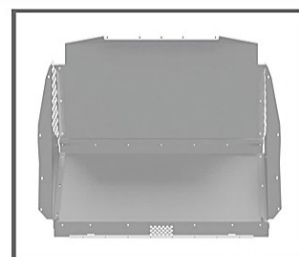


## **RAM ProMaster City – GALV. PERFORÉ DES 2 COTÉS**

- Matériel: Acier galvanisé
- Camion: RAM ProMaster City

**Aluminium**

**26-42091**

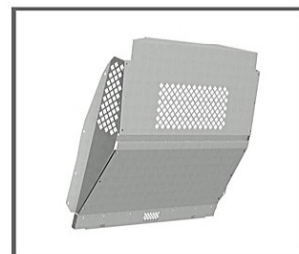
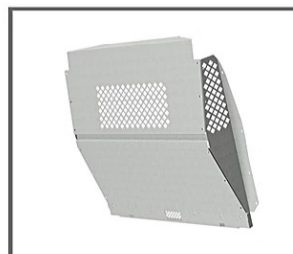
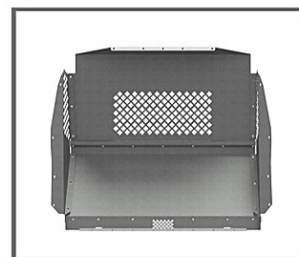
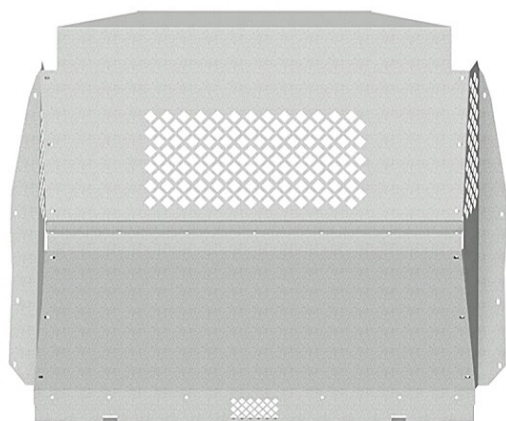


## **RAM ProMaster City – ALUM. PERFORÉ DES 2 COTÉS**

- Matériel: Aluminium
- Camion: RAM ProMaster City

**Acier galvanisé**

**26-42072**

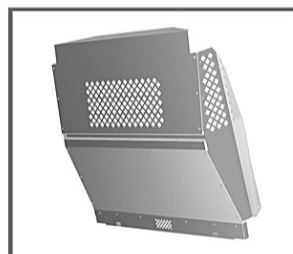
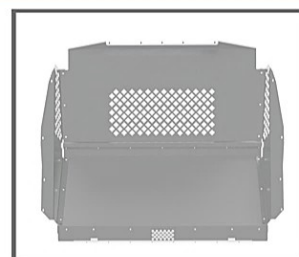
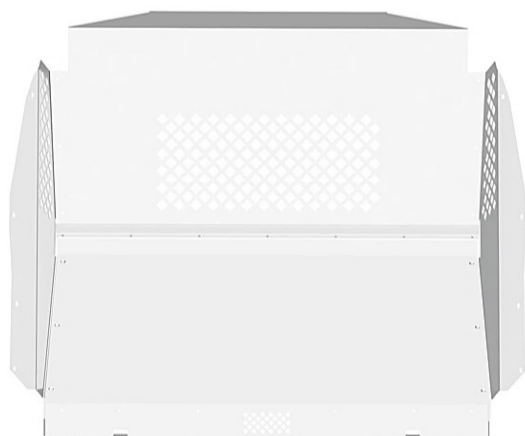


## **RAM ProMaster City – GALV. PERFORÉ 3 FACES**

- **Matériel: Acier galvanisé**
- **Camion: RAM ProMaster City**

**Aluminium**

**26-42093**



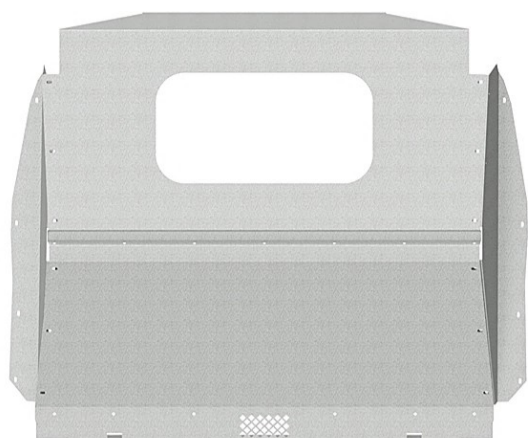
## **RAM ProMaster City – ALUM. PERFORÉ 3 FACES**

- **Matériel: Aluminium**
- **Camion: RAM ProMaster City**



**Acier galvanisé**

**26-42097**



---

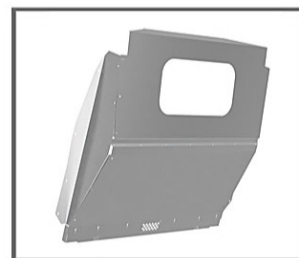
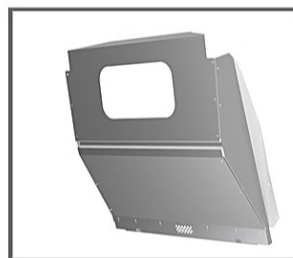
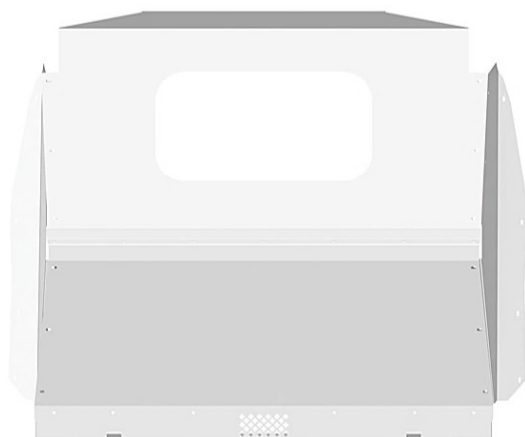
## **RAM ProMaster City – GALV. AVEC VITRE**

---

- **Matériel: Acier galvanisé**
- **Camion: RAM ProMaster City**

**Aluminium**

**26-42095**



---

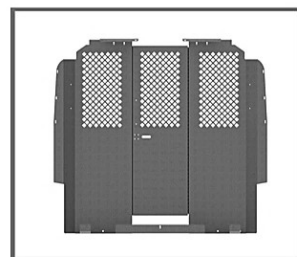
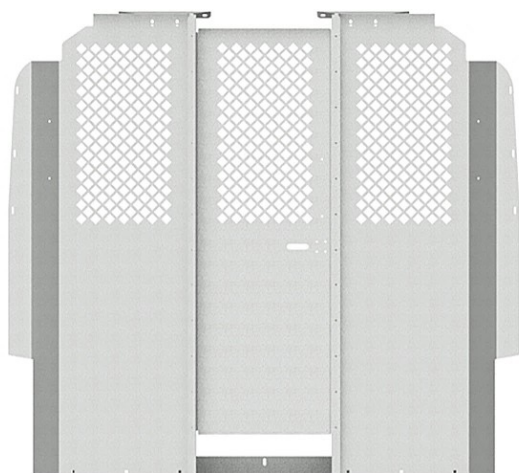
## **RAM ProMaster City – ALUM. AVEC VITRE**

---

- **Matériel: Aluminium**
- **Camion: RAM ProMaster City**

## Acier galvanisé

26-42001

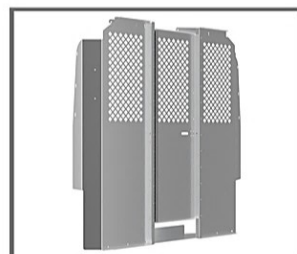
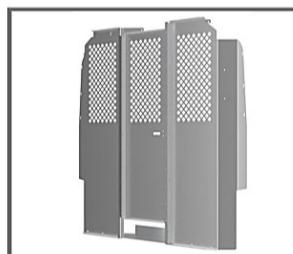
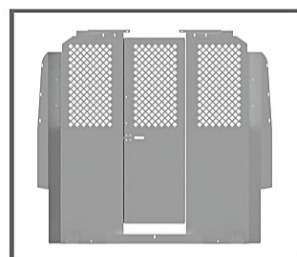
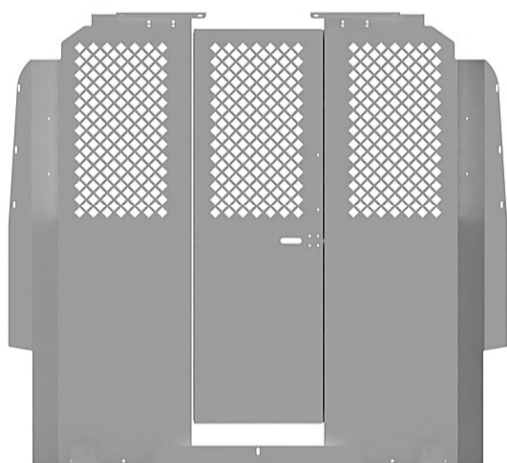


### RAM ProMaster – AVEC PORTE BATTANTE STANDARD ET COTÉS PERFORÉS

- Matériel: Acier galvanisé
- Camion: RAM ProMaster

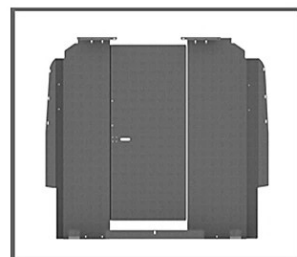
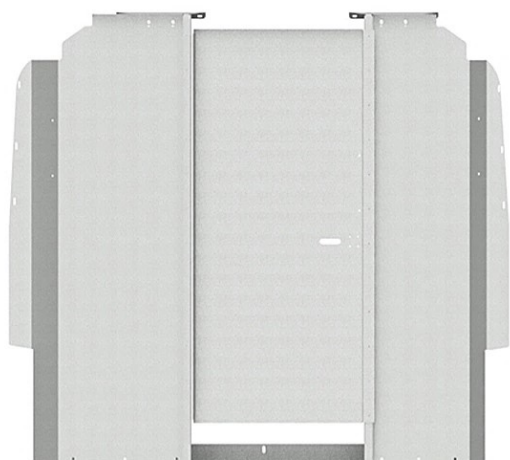
## Aluminium

26-42002

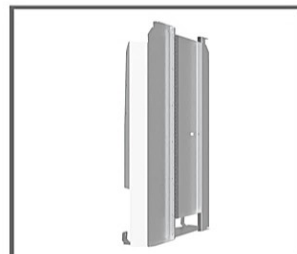
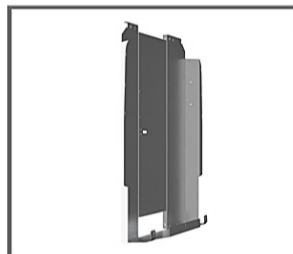
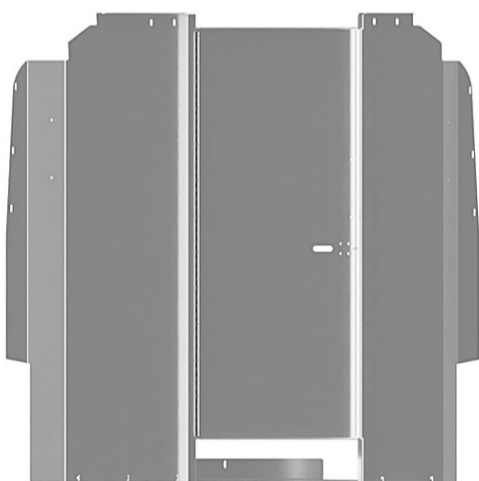


### RAM ProMaster – AVEC PORTE BATTANTE STANDARD ET COTÉS PERFORÉS

- Matériel: Aluminium
- Camion: RAM ProMaster

**Acier galvanisé****26-42084****RAM ProMaster – GALV. AVEC PORTE BATTANTE**

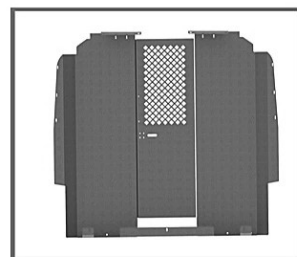
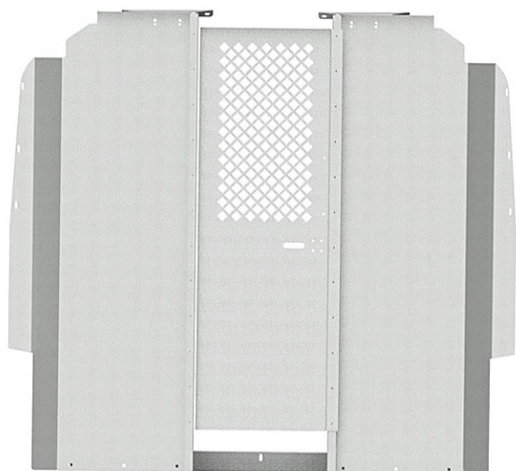
- Matériel: Acier galvanisé
- Camion: RAM ProMaster
- Porte de 24'' de Large

**Aluminium****26-42082****RAM ProMaster – ALUM. AVEC PORTE BATTANTE**

- Matériel: Aluminium
- Camion: RAM ProMaster
- Porte de 24'' de Large

**Acier galvanisé**

**26-42090**

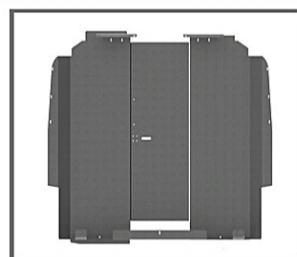
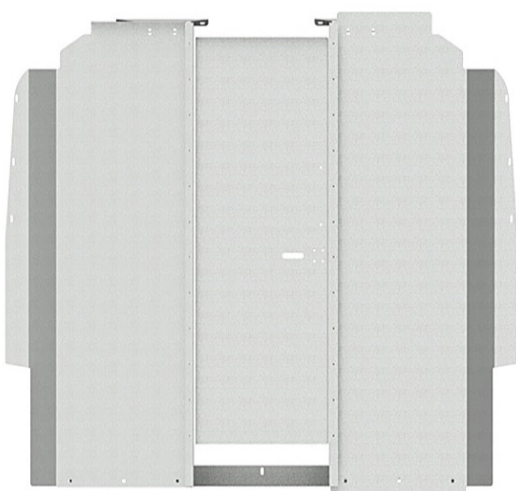


**RAM ProMaster - GALV. AVEC PORTE PERFORÉ**

- Matériel: Acier galvanisé
- Camion: RAM ProMaster

**Acier galvanisé**

**26-42085**



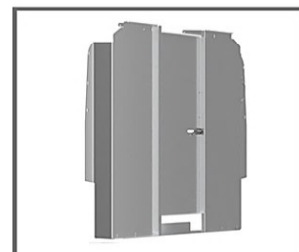
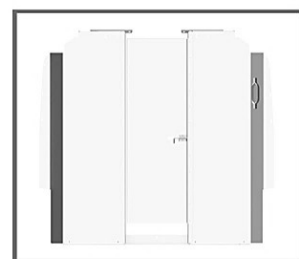
**RAM ProMaster - GALV. SANS PERFORATION**

- Matériel: Acier galvanisé
- Camion: RAM ProMaster



**Aluminium**

**26-42076**

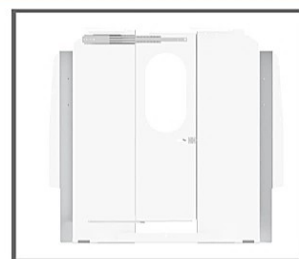
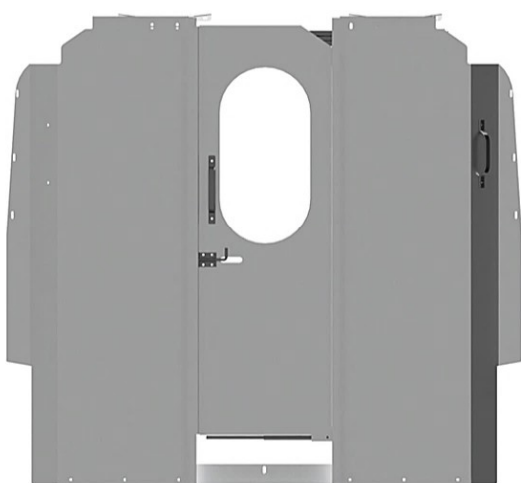


**RAM ProMaster – ALUM. AVEC PORTE BATTANTE**

- **Matériel: Aluminium**
- **Camion: RAM ProMaster**

**Aluminium**

**26-42073**

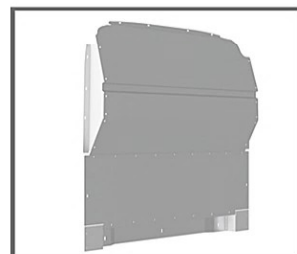
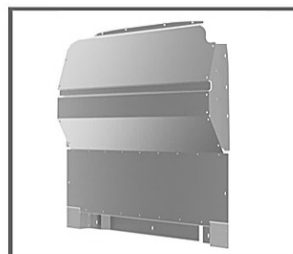
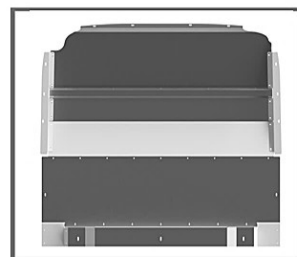


**RAM ProMaster – ALUM. AVEC VITRE, PORTE COULISSANTE**

- **Matériel: Aluminium**
- **Camion: RAM ProMaster**

Aluminium

26-42201



## RAM ProMaster – ALUM. SANS PERFORATION

- Matériel: Aluminium
- Camion: RAM ProMaster

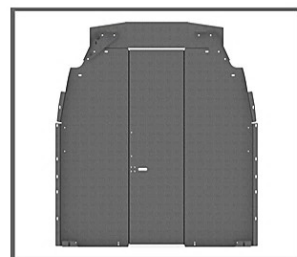
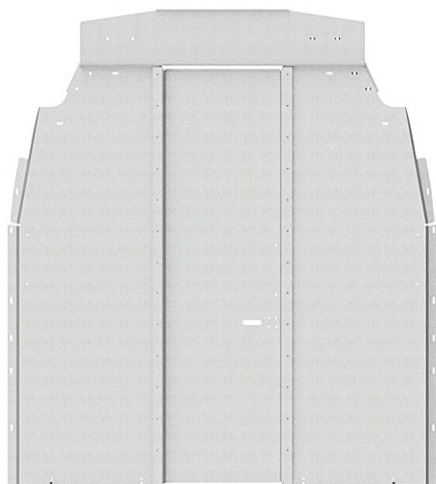


**CLOISON POUR CAMION**  
**ET BIEN PLUS**

1-855-835-2422  
[www.6sserden.com](http://www.6sserden.com)

**Acier galvanisé**

**26-42083**

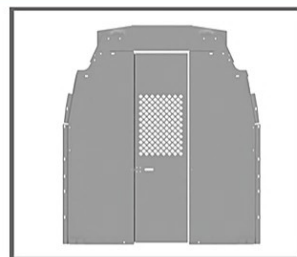
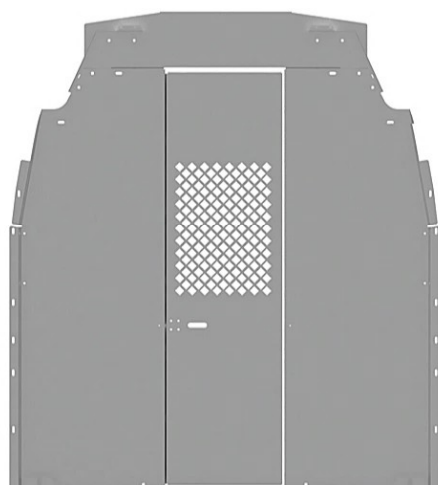


**FORD TRANSIT HR – GALV. AVEC PORTE SANS PERFORATION**

- **Matériel: Acier galvanisé**
- **Camion: Ford Transit Hr**

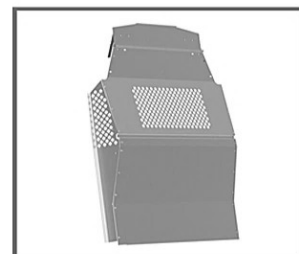
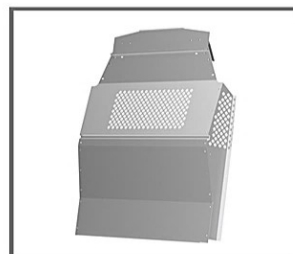
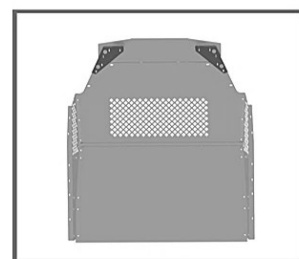
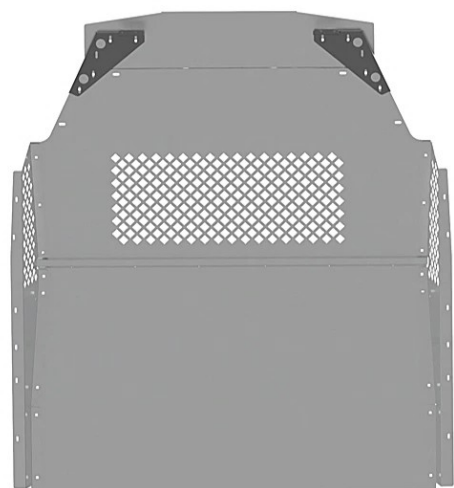
**Aluminium**

**26-42070**

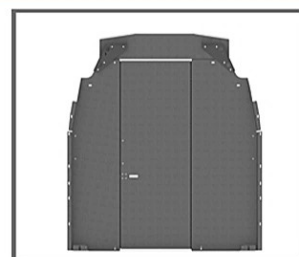
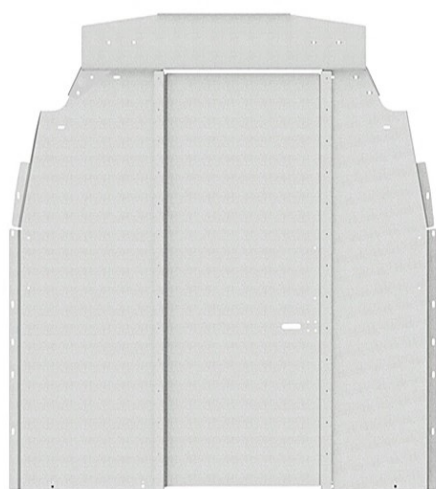


**FORD TRANSIT CONNECT – ALUM. AVEC PORTE BATTANTE PERFORÉ**

- **Matériel: Aluminium**
- **Camion: Ford Transit Connect**

**Aluminium****26-42087****FORD TRANSIT HR – ALUM. PERFORÉ 3 FACES**

- Matériel: Aluminium
- Camion: Ford Transit Hr

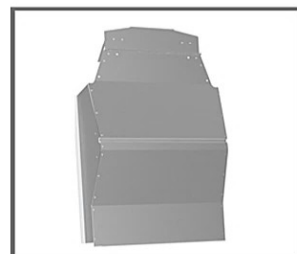
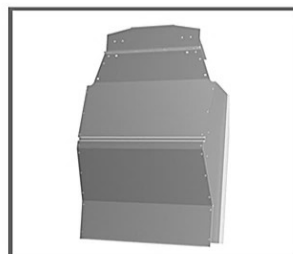
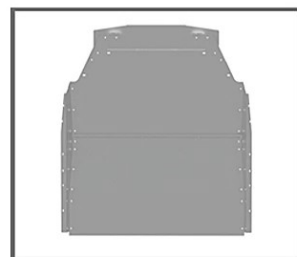
**Acier galvanisé****26-42098****FORD TRANSIT HR – GALV. HAUT AVEC PORTE BATTANTE**

- Matériel: Acier galvanisé
- Camion: Ford Transit Hr
- Porte de 24'' de Large



**Aluminium**

**26-42071**

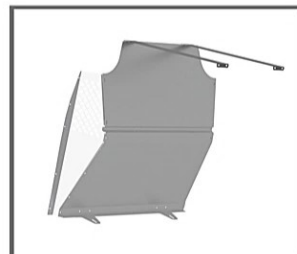
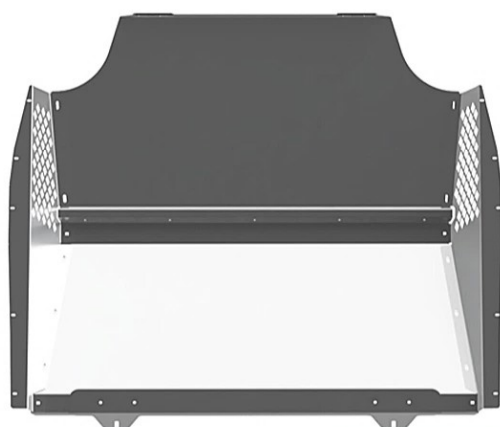


**FORD TRANSIT - ALUM. CLOISON PROFILÉE**

- Matériel: Aluminium
- Camion: Ford Transit

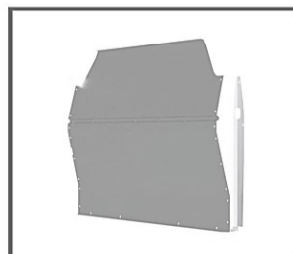
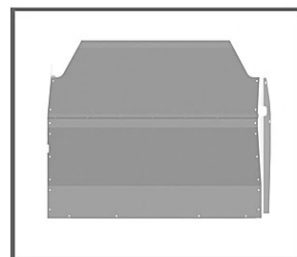
**Aluminium**

**26-43001**

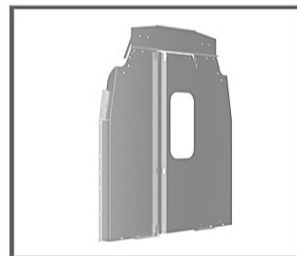
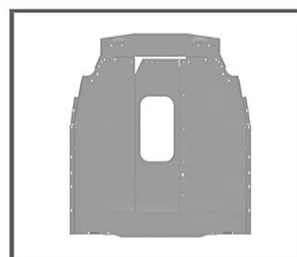


**FORD TRANSIT CONNECT - ALUM. CLOISON PROFILÉE**

- Matériel: Aluminium
- Camion: Ford Transit Connect

**Aluminium****26-42200****FORD TRANSIT - ALUM. CLOISON PROFILÉE**

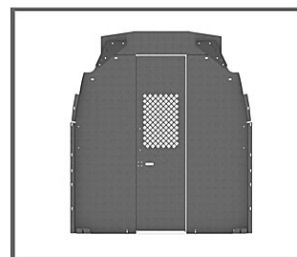
- **Matériel: Aluminium**
- **Camion: Ford Transit**

**Aluminium****26-42100****FORD TRANSIT - ALUM. PORTE COULISSANTE, AVEC FENÊTRE**

- **Matériel: Aluminium**
- **Camion: Ford Transit**

**Acier galvanisé**

**26-42086**



## FORD TRANSIT - GALV. AVEC PORTE PERFORÉ

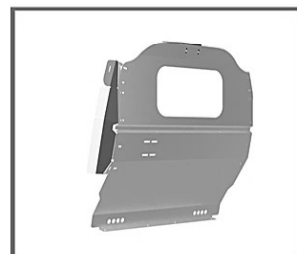
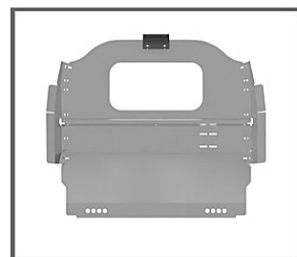
- Matériel: Acier galvanisé
- Camion: Ford Transit



**CLOISON POUR CAMION**  
**ET BIEN PLUS** 1-855-835-2422  
www.6sserden.com

Aluminium

26-42092



**NISSAN NV200 – ALUM. CLOISON PROFILÉE AVEC FENÊTRE**

- **Matériel: Aluminium**
- **Camion: NISSAN NV200**



**CLOISON POUR CAMION  
ET BIEN PLUS**

1-855-835-2422  
[www.6sserden.com](http://www.6sserden.com)